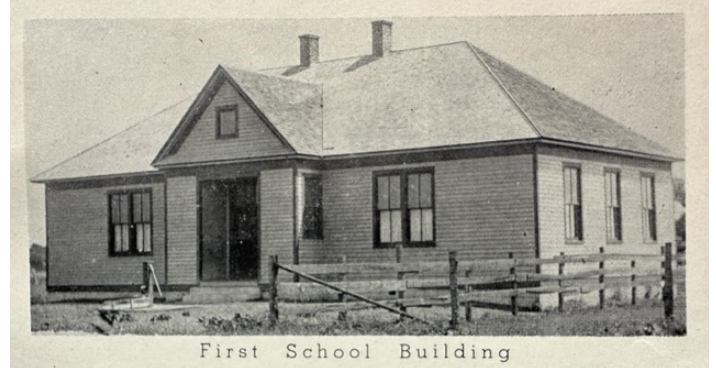


## HOW WE GOT HERE

CCS was founded in 1912 by Dutch immigrants as a school closely aligned with local congregations of the Christian Reformed denomination. Beginning in the mid-to-late 1800s, following a pattern set in the Netherlands, members of the Christian Reformed Church established a system of Christian day schools in the US.



Calvin Christian School was opened on March 17 and was dedicated on March 19, 1912. The first frame building was raised and doubled in size to accommodate 4 classrooms. The dedication of our current campus occurred in 1948. Several additions followed including a second floor and a gymnasium. While there has not been an expansion in almost 50 years, a growing and vibrantly diverse study body has resulted in the need to renovate and expand.

There is much evidence of God's faithfulness - from a debt-free organization, many faithful donors, teachers who have been led and developed here, and graduates who have gone on to do great things. Over the past 111 years, God has prepared thousands of young men and women better to understand their place in transforming his world.

## WHO WE PURPOSEFULLY DEVELOP

A Calvin Christian School graduate is prepared to boldly follow Jesus and to develop their gifts to see God's kingdom come. Possessing a faith grounded in God's Word, he/she is committed to learning and understanding that the pursuit of excellence, truth, and shalom are commitments for *life*.

For *life*

Learning

Faith

- **Seeks Justice** - Learners pursue restorative transformation, seeking to bring wholeness where there is brokenness.
  - **Enjoys Creation** - Learners delight in God's qualities - his eternal power and divine nature exhibited in what he created.
  - **Serves Selflessly** - Learners follow the example of Christ's selfless love by exercising kindness, empathy, and compassion.
  - **Stewards the Earth** - Learners steward, locally and globally, all God has created by pursuing and practicing new ways to tend and care for his creation.
- 
- **Discovers Order** - Learners seek and find God's fingerprints in the intricate, purposeful design of what he has created.
  - **Creates Beauty** - Learners engage in beautiful work that enriches the world and reflects God's heart for diversity, complexity, and creativity.
  - **Builds Community** - Learners build communities of grace and purpose, making space for the belonging of others.
- 
- **Worships God** - Learners extend, both in daily tasks and in deliberate times of praise, their words, actions, talents, and thoughts in awe and celebration of God, who is worthy.
  - **Discerns Idolatry** - Learners recognize stories that invite them to seek truth and participate with the truth by aligning learning with the knowledge and person of God.
  - **Reflects God's Image** - Learners mirror God's goodness through who they are and what they do, and delight in the image of God inherent in all people.



# What We're Working Toward



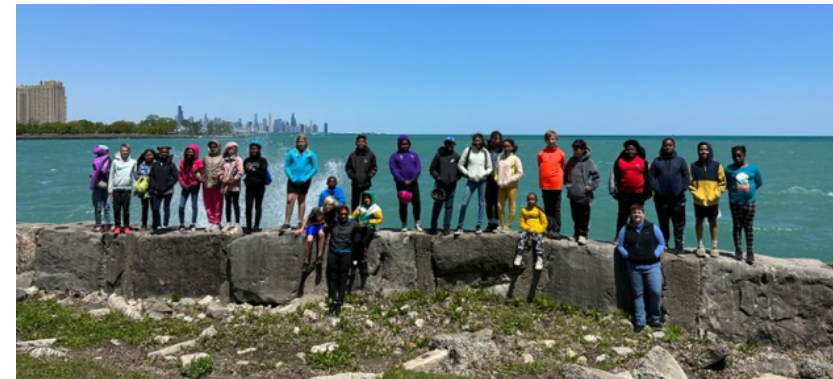
We are working to see our students live boldly for Jesus here and beyond. We desire to see our graduates go on to be noticed for who they serve and defend. In the next decade, the keys to our impact and success will be seeing our graduates using their lives to make the crooked straight, bringing hope, healing, and restoration.

1. Reduce and remove barriers to accessibility, addressing employment, philanthropy, tuition, board membership, and the alignment of efforts with other local Christian schools.
2. Ensure that we teach our students well. This means providing students with opportunities for real work that meets a real need for real people. It means deepening local, supportive connections to community organizations and businesses. It also will require renovating and expanding our facilities to ensure that we have the spaces and tools for those God is increasingly drawing to us.



## HOW WE ARE GOING TO GET THERE

The goal of the Called To Community campaign is to make Calvin Christian School a more vibrant and accessible place to lead, teach and learn as we seek to further engage our student's hearts (faith), stimulate their minds (learning), and inspire their hands (for life). To fulfill our mission and have a greater impact, we seek a facility that can embrace more students and the tools and learning spaces they need. We understand that accomplishing the next donor-driven steps will require God's people to do extraordinary things.



### Step 1 (\$3.1 million - completed)

Over the past 5 years, 1,106 donors have generously given over \$3,000,000. We are grateful for the opportunity we have had to not only fulfill our annual fund goals, but we have been able to make some key investments in our programs and facilities.

### Step 2 (\$9.9 million)

We are excited about taking the next step in significant upgrades and investments to our facilities and programs. This includes:

- Two new classrooms to provide additional space for teaching and learning as our enrollment increases.
- A multipurpose space for chapel, lunch, special programs, and community engagement.
- A dedicated gymnasium entrance along with expanded locker rooms, concessions, and a hospitality area.
- The purchase of two adjacent properties to create additional space for parking and student arrival and dismissal processes.
- The heating system will be replaced and air conditioning expanded to every classroom ensuring that Calvin's staff and students will have comfortable places in which to spend meaningful time. The electrical system will receive a complete overhaul ensuring we have the capacity to power the tools and systems that we rely on - and making us solar-ready.
- Commitment to teaching and learning through a distinctly Christian lens using Teaching for Transformation.
- Create the capacity to accept more students by hiring 2 new teachers, further expanding the student services program to include enrichment, and ensuring that tuition assistance needs are met.



Locker Room View



Cafeteria View



### Steps 3 and 4

As enrollment continues to grow, we will need additional learning spaces for students. The result is an 8 classroom addition to accommodate expected continued growth in grades 4-8 and the renovation of most interior spaces. It will also include refreshing the school brand, centralized administrative and office spaces, and the creation of a more welcoming space for parents and guests.



Front Porch View



Classroom Wing View

### The Timeline

